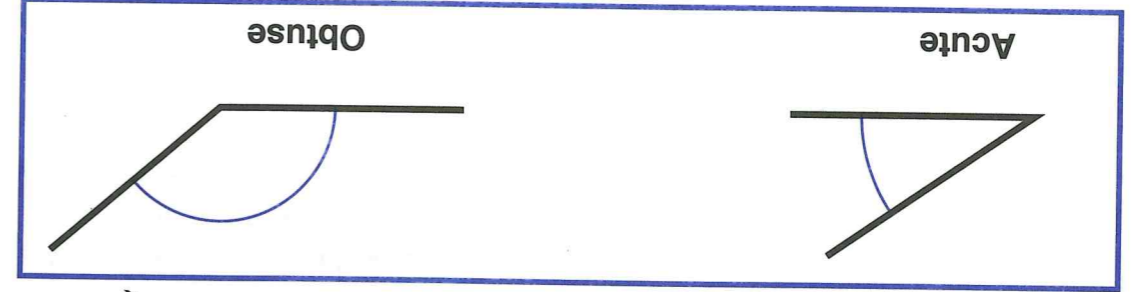
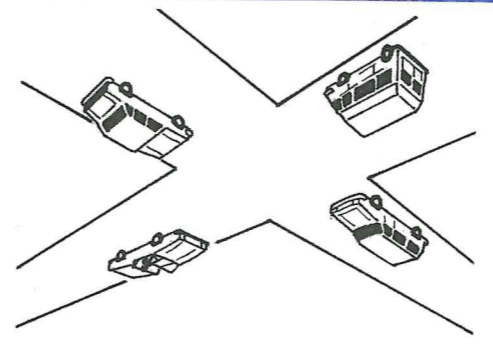




**ANGLES**

Lines that cross are said to **intersect**. In America a crossroads is called an **intersection**. When lines intersect they form angles. An angle that is **less than** a right angle is said to be **acute** (sharp). An angle that is **greater than** a right angle is said to be **obtuse**.



1. Say whether each of these angles is a right angle, an acute angle, or an obtuse angle.

a. b. c.   
 d. e. f.   
 g. h. i.   
 j. k. l.

**MORE ANGLES**

1. Draw 4 acute angles and 4 obtuse angles.
2. Use your ruler and set square to draw 4 right angles.
- Put each of these sets of 4 angles in order. Start with the smallest.

3. a. b. c. d.   
 3. a. b. c. d.   
 4. a. b. c. d.   
 5. a. b. c. d.   
 6. a. b. c. d.

**PUZZLE POWER**

How many **right angles** can you see in this drawing?  
 How many **squares** can you see in this drawing?

